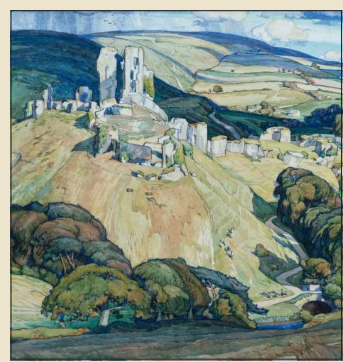




# UT & ABOUT



## Russell Coates Art Gallery and Museum

Artists in Purbeck: Spirit of Place

THE current exhibition at Bournemouth's Russell Coates Art Gallery & Museum, Artists in Purbeck: Spirit of Place, must close on 16th March.

This groundbreaking exhibition, co-curated by Dr Gill Clarke MBE, delves into the beautiful artistic heritage of Purbeck during a transformative time.

Discover works by well-

known artists who were inspired to capture the stunning landscape and coastline of this picturesque region from the first half of the 20th century through to the present day.

As well as showcasing a rich collection of artworks from the museum, the exhibition features significant loans from private and regional collections. Don't miss it!

Russell Coates Art Gallery and Museum  
East Cliff, Bournemouth, BH1 3AA  
www.russellcoates.com



## Artists in Purbeck

Spirit of Place  
12 October 2024 - 16 March 2025

© The Leslie Moffat Ward Estate Image Credit: Russell Coates Art Gallery & Museum

## Palais des Vaches

Unique and vibrant art

INJECT some colour into your weekend at Exbury's stunning Palais des Vaches Art Gallery.

We are open on Saturday 8th and Sunday 9th February from 11am to 4pm with delicious pop-up dining available from P&P Catering and Events.

Set in the New Forest on the banks of Beaulieu River, Palais des Vaches is a unique and enchanting art gallery created during the pandemic by Exbury Gardens' president Nick de Rothschild and his wife Caroline. Once an agricultural milking parlour, the historic building has been lovingly transformed into a stunning exhibition space and private event venue.

The Palais or 'Cow Palace' is a testament to the vision and passion of Nick and Caroline, who worked with local craftspeople to restore the original structure, preserving its character while infusing the building with contemporary flair. The result is a stunning juxtaposition of old and new, where historic charm meets modern elegance.

The Palais' three interconnected rooms take visitors on a journey through a diverse range

of artworks, where celebrated local artists and emerging talents exhibit a variety of mediums, including paintings, photography, sculptures and ceramics.

Co-curated with Coastal Gallery, the art show features work by more than 50 local and nationally renowned artists including Andy Baesehman, Stewart Beckett, Jill Berelowitz, Martyn Brewster, Julie Collins, Jackie Giron, John Isley, Long Ly, William Pounds, Kim Thompson, Paula Mitchell, Michael Turner, Chris Whittaker, Claire Wiltsher, and venue owners themselves, Caroline and Nick.

Complementing the gallery's vibrant collection of art and photography, the courtyard garden provides a serene outdoor space to admire sculptures and the surrounding landscape.

Let us this month on Thursday 27th February, the Palais will host portrait and landscape artist Stewart Beckett's first solo exhibition 'Out of the Grey'.

A regular exhibitor at London's prestigious Mall Galleries, Stewart was recently made an associate member of the Royal



Institute of Oil Painters.

Out of the Grey features a large body of work, including charcoal drawings, portrait paintings and colourful landscapes, curated to reflect the transition from winter to spring.

Palais des Vaches is a versatile venue that can accommodate weddings, corporate retreats, and private functions. The large catering kitchen, spacious courtyard, and picturesque meadow provide the perfect backdrop for unforgettable celebrations. The Palais puts the 'art' in your party! The venue also boasts its own art school offering a range of courses led by distinguished artists.

Palais des Vaches opens regularly at weekends with incredible pop-up dining options from top local caterers.

Admission is free with ample free parking available. From Thursday 27th February, Palais will also be open to the public every Thursday from 11am to 3pm.

To find out more visit [www.palaisdesvaches.co.uk](http://www.palaisdesvaches.co.uk) or follow us on social media @palaisdesvaches



## Longdown Activity Farm

Farming fun for half-term

LONGDOWN Activity Farm will be opening the farm gates again for lots of farming fun from February half-term.

Come and join us for a fantastic day out with the whole family. A daily schedule of farming activities includes kid goat and calf bottle-feeding, duck feeding, and meeting small animals such as baby chicks, rabbits, and guinea pigs in the brilliant Animal Encounter Barn.

There are plenty of friendly animals to see around the farm including cows, alpacas, pygmy goats, donkeys and ponies, pigs, chicks, chickens, and geese, plus lots of babies, large and small.

There's so much playtime fun to be had at the farm including our fantastic all-inclusive outdoor play area which includes trampolines, zip wire, climbing frame, an accessible swing for wheelchair users, and much more!

If the weather takes a turn, the Piglets Seating Area is a large undercover area fitted with plenty of seating for tired feet to recover, along with some piggy-themed fun from floor to ceiling which will have your children squealing with delight.

There are plenty of other playtime favourites, including the Pitchfork and Putt crazy golf course, trampolines, ride-on toy tractors, go-karts, and new sand digger.

The tearoom and kiosk, serving drinks and snacks, has



outdoor seating and a limited amount of covered seating nearby. There is also a gift shop, nappy changing and quiet room. Longdown Activity Farm is proud to offer a Changing Room facility complete with an adult-sized changing bed and lifting hoist for visitors with assisted needs.

The Longdown Farm Shop has a large range of delicious locally sourced produce, and the Chicken Shack is stocked with plenty of poultry feed and equipment. There is no charge to visit the Farm Shop, which is open to visitors and non-visitors of the Activity Farm.

Longdown Activity Farm will be opening the farm gates for the 2025 season from Saturday 15th February, every day until 4th November, and then on further selected days through November and December. Why not buy a fantastic value season ticket so that you can visit us whenever we are open throughout the season? See our website or ask in the gift shop for details.

\* Small extra charge

**ASHURST NEW FOREST**  
**LONGDOWN Activity Farm**  
IT'S A REAL HANDS-ON EXPERIENCE!

**FARMYARD FUN FOR EVERYONE**  
A full schedule of animal activities which run throughout the day. Plenty of playtime fun too! Farm produce shop and gift shop.  
023 8029 2837 [longdownfarm.co.uk](http://longdownfarm.co.uk)  
OPEN EARLY - FEB HALF-TERM TO OCT HALF-TERM



Back row from left, Stewart Mechem and Bev Saunders from Coastal Gallery, Caroline de Rothschild, with Nick de Rothschild seated

## Jane Bidwell Flowers

The perfect blooms for your Valentine

JANE Bidwell Flowers in Hythe have been helping make Valentine's Day special for over 20 years with their lovely floral gifts.

Jane and her fabulous team can create something to suit every budget, from a single red rose to a beautiful hand-tied bouquet of 12. Or for something more unusual, a hat box arrangement bursting with gorgeous stems.

Valentine's Day doesn't have to be all about the red roses either, a thoughtful arrangement in your loved one's favourite colour is a great option to buck the trend!

So why not say how much you love someone on Valentine's Day with a beautiful floral gift from Jane Bidwell Flowers? Flowers can be delivered locally on Valentine's Day or you can collect from the shop in Eyewell Road, Hythe.

For more information pop into Jane Bidwell Flowers in Hythe, open Monday to Saturday, call 023 8084 4114, email [info@janebidwellflowers.co.uk](mailto:info@janebidwellflowers.co.uk) or visit [www.janebidwellflowers.co.uk](http://www.janebidwellflowers.co.uk)

**EVERY WEDNESDAY**  
10.30am - 3pm  
United Reformed Church Hall  
High Street Lympington  
Free Entry

For more information  
[info@picknmixcrafts.com](mailto:info@picknmixcrafts.com)

Valentine's Day Flowers  
Jane Bidwell Flowers  
023 8084 4114  
[www.janebidwellflowers.co.uk](http://www.janebidwellflowers.co.uk)

**PALAIS DES VACHES**  
COASTAL GALLERY  
FOR THE LOVE OF ART  
HEAVENLY INSPIRED VALENTINE'S DAY GIFTS  
DELICIOUS POP-UP DINING THIS WEEKEND  
8TH AND 9TH FEBRUARY 11AM TO 4PM  
LOWER EXBURY FARM, EXBURY, SO45 1AE  
[www.palaisdesvaches.co.uk](http://www.palaisdesvaches.co.uk) [info@palaisdesvaches.co.uk](mailto:info@palaisdesvaches.co.uk)  
@palaisdesvaches

Discover Blossom Chinese Restaurant & Bar - Now Open!  
Introducing Blossom Chinese Restaurant & Bar, the newest destination for authentic Chinese cuisine and vibrant bar culture. Whether you're craving bold flavors, comforting classics, or innovative cocktails, we've crafted a menu that celebrates the best of tradition and modern flair.  
Join us today and experience a fresh take on Chinese dining in a warm, inviting atmosphere. Come see what makes Blossom the talk of the town!

Monday and Wednesday - Saturday: OPEN 12 - 2.30pm & 5 - 11pm. Tuesday and Sunday: CLOSED.  
65 Old Milton Road, New Milton, BH25 6DN • 01425 612288  
[www.blossomrestaurant.uk](http://www.blossomrestaurant.uk)