

Advertisement feature

Oakhaven hospice

Oakhaven is here for everyone in our community – and needs your support now more than ever

With the hospice sector reporting a nationwide financial crisis, we speak to Andrew Ryde, Chief Executive of Oakhaven, your local hospice covering the New Forest, Totton and Waterside communities.

"As we head into autumn, we would like to extend our sincere thanks to all our supporters. Without you, Oakhaven simply wouldn't be here.

"Like many other hospices in the UK, the 'cost-of-living crisis' is having a detrimental effect on Oakhaven's ability to generate sufficient income to cover day-to-day running costs. According to Hospice UK, the UK hospice sector, which supports 300,000 people annually, is facing the worst financial crisis it has ever seen, with a collective deficit of £77 million in the financial year 2023-24.

"Times are tough; at least a fifth of hospices across the country have either cut services in the last year or are planning to do so – and some are now having to cut jobs. As costs have surged, local communities have stepped up to support their hospices. However, the modest amounts of state funding that hospices receive have not kept pace with running costs.

"Here at Oakhaven, we need your support more than ever. It costs £8 million each

year to fund our vital services, which, without doubt, reduce some of the pressure on the NHS. However, just 11% of Oakhaven's funding is covered by the government. For the remaining 89% the charity relies on the kindness of our community's donations, fundraising, gifts in wills and income from the Oakhaven charity shops and social enterprise Oakhaven Care Ltd.

"At present, we are not planning to cut our vital services at Oakhaven. But in these challenging times, something has to change and we hope very much that the new government will find a more sustainable way to fund the independent hospice sector in the future.

"Demand for our services continues to grow and Oakhaven Hospice currently supports around 360 patients at any one time with specialist palliative and end-of-life care, **free of charge.**

"For over 30 years, our nurses, doctors, counsellors, and therapists have eased physical symptoms and offered psychological, spiritual and social support. As well as the ten

beds in the hospice's Inpatient Unit, many patients are cared for in their own homes by Oakhaven's Community Nursing Team throughout our New Forest, Totton and Waterside communities, along with regular visits to Oakhaven's Day Hospice.

"In addition to patient referrals, thousands of local people affected by a life-limiting condition, caring for a loved one or navigating bereavement are supported each year by Oakhaven's Wellbeing team; last year over 3,200 people visited the Coates Centre for bereavement and wellbeing support. Oakhaven's care is tailored to suit the needs of each individual and, with a blend of specialist expertise and compassion, offers support for families at the most difficult of times.

"We are hugely grateful to all our supporters, fundraisers, volunteers and donors, without whose unwavering generosity we would not be able to continue providing expert end-of-life care and support to families throughout our community.

"Please read on to find out more about the services we provide and how, if you are able, you could help Oakhaven at this challenging time."



The Coates Centre is set in the peaceful gardens of Oakhaven Hospice

Join Oakhaven for a conversation about the future of end-of-life care for the New Forest, Totton and Waterside communities

What's important to you and your family?

This autumn, the Oakhaven team is defining the Hospice's strategy for the next 5-10 years and considers the views of its local community to be a vital part of the process.

Over the coming weeks, you are invited to join an informal session taking place in your community to help shape Oakhaven's services for the future. This is your opportunity to find out more about your local hospice and the services available for local families – and to help ensure that Oakhaven is meeting the future needs of families living throughout the New Forest, Totton and Waterside communities.

Join the conversation over tea, coffee and biscuits!

■ Tuesday 1st October, 4.30-6pm at West Totton Community Centre (Hazel Farm Road, Totton SO40 8WU)

■ Wednesday 2nd October, 4-6pm at New Milton Community Centre (Osbourne Road, New Milton BH25 6EA)

■ Wednesday 9th October, 3.30-5pm at Lyndhurst Community Centre (Main Car Park, Lyndhurst SO43 7NY)

■ Saturday 19th October, 11am-1pm at the Coates Centre, Oakhaven Hospice (Lower Pennington Lane, Lymington SO41 8ZZ)

The Coates Centre at Oakhaven is here to support everyone in the community

Based at the Coates Centre in the grounds of Oakhaven Hospice, Oakhaven Wellbeing is here to support everyone in our New Forest, Totton and Waterside communities who is living with a life-limiting condition, caring for someone or coming to terms with a loss.

The Coates Centre is open Monday to Friday, between 10am and 4pm (closed bank holidays) and, since opening its doors ten years ago, it has provided a warm welcome, friendship, information and support to many thousands of local people.

At the Coates Centre, Oakhaven provides wellbeing support for everyone in the community affected by illness, whether life-limiting or life-affecting – not just those facing end-of-life. The aim is to help people at a much

earlier point after their diagnosis and give them advice and information on the potential implications of their condition, as well as social support and interaction.

A wide range of groups, practical drop-in sessions and wellbeing activities take place every month – or you are welcome to simply pop into the light and airy 'Hub' where you can sit and enjoy the peaceful surroundings or chat with one of Oakhaven's trained volunteers over a cup of tea or coffee.

Regular wellbeing groups, workshops and activities this autumn

Art in the Hub
Mondays, 10am-12pm

Sew with Sue
Mondays, 1.30pm-3.30pm

Bereavement support group
1st Wednesday each month, 10.30am-12pm

Dementia support group
Thursdays, 10.30am-12pm

IT Café
1st & 3rd Friday each month, 10.30am-12pm

Citizens Advice in the Hub
2nd & 4th Friday each month, 10am-12pm

Hand massage workshop
Tuesday 1 October, 2pm-3.30pm

Aromatherapy workshop
Wednesday 6 November, 10am-11.30am

Further activities and workshops including Sing for Joy, Mindfulness and Movement are planned, for full details please see the latest Oakhaven Wellbeing calendar at www.oakhavenhospice.co.uk/support-and-activities

Oakhaven is committed to helping carers within the community and have detailed some information

to support you in your time of need at www.oakhavenhospice.co.uk/signposting-for-carers

Bereavement support

Oakhaven provides guidance and ongoing support for anyone who has lost a loved one, no matter the length of time that has passed. If you live in the New Forest, Totton and Waterside area you can access support at the Coates Centre at any time – it's a safe space where Oakhaven's trained volunteers can support you, chat and listen.

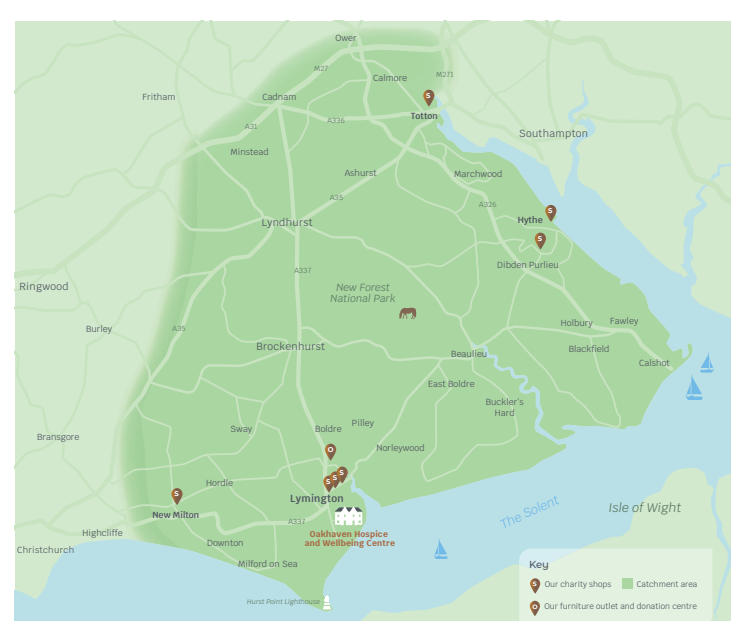
Many who are grieving find comfort in others. You are welcome to drop into Oakhaven's Bereavement Support Group at the Coates Centre on the first Wednesday of each month between 10.30am and 12pm. Connect with others who have experienced a loss, in a relaxed and friendly space. Come alone or you are welcome to bring a friend.

When you feel ready to start socialising again, the 'Widowed Friendship Club' offers the opportunity to meet with people who understand. This self-help group organised by widowed men and women enjoys regular get-togethers, including lunches, afternoon teas, walks, day trips, holidays and a fish and chip supper on the fourth Friday of each month.

Oakhaven also provides cookery courses and signposting to specialist bereavement services which may be helpful to your specific loss. You can find useful contacts at www.oakhavenhospice.co.uk/bereavement-support

"At Oakhaven I found help in finding a 'new normal' life after the death of my wife – I learnt some cookery skills and have met a wonderful group of friends."

"Oakhaven wellbeing has helped me find reassurance and a feeling that I am not alone."



Oakhaven's catchment area

Own your later life exhibition

Saturday 28th September at Brockenhurst College 10am - 4pm

ALL welcome FREE entry & parking

- Later life conversations
- Importance of fitness
- Eating for longevity
- Future planning
- Avoiding scams
- Citizens advice
- Care options
- Wellbeing



Make every moment matter

Sponsored by **NEW FOREST** Find full details and register for free talks at oakhavenhospice.co.uk/own-your-later-life



"People don't think they will ever need Oakhaven Hospice – but we did"

Over the summer you may have received a letter from Oakhaven, in which Lindsay explained why Oakhaven is so important to local families.

"Richie and I fell in love and had two amazing children, Lauren and Ed. We just adored life as a family, until Richie's indigestion started to flare up and we were eventually given the devastating news of cancer.

The despair and desperation it brought with it was unbearable, having to watch the love of your life suffer and you can't do anything about it, is soul-destroying. When we arrived at Oakhaven Hospice we were at

our lowest point. Within a day it was like having Richie back with us again. Finally, someone was listening to us with empathy and patience.

Oakhaven takes away that fear, desperation, and despair when you have no other support. We are so lucky to have it and we need to keep it. No one truly knows how important Oakhaven really is until you need them. We all go through life, and we forget that this place is everything to someone right now. That's why today I am asking you to join me in protecting that. A donation to Oakhaven today isn't just a gift – it's a lifeline for families facing the unimaginable."

Read Lindsay's story at www.oakhavenhospice.co.uk/stories



Lindsay and Richie with their children

Light up a Life in memory of a loved one

Lymington
Monday 9th December
3pm and 6pm

Hythe
Tuesday 10th December
6pm

Totton
Wednesday 11th December
6pm

Due to limited capacity at each venue, our Light up a Life events will be ticketed this year. Look out for your pack in the post, scan the QR code, or visit oakhavenhospice.co.uk/light-up-a-life

Book your tickets for Light up a Life today!



Charity Registration No. 900215 (England & Wales)





Advertisement feature

Seven ways you can support Oakhaven this 'Oakttober'!



With just 11% of its funding covered by the government, the support you give to Oakhaven is crucial, providing the funds your local hospice needs to run its vital services for us, each and every year.

Oakhaven's support and care is not just within the building of the hospice, specialist teams reach out in patients' homes across our community to support people who wish to remain within familiar and safe surroundings. With the hubbub of normal life carrying on, the ability for patients to continue to be a part of daily life is a precious gift.

Here are seven ways you can help Oakhaven...

'Oakttober' is all about supporting Oakhaven in the month of October!

Oakhaven Hospice is here to support everyone in our community, delivering specialist care to those during their illness, at the end of life and in bereavement.



The Tree of Life in Oakhaven's garden is hung with copper oakleaves engraved in remembrance of loved ones

1. Donate

Every donation, whatever its size, helps Oakhaven to make every moment matter for local families facing the end of life.

For those who are touched by Oakhaven because of a diagnosis or the loss of a loved one, the support offered by Oakhaven brings relief and a chance to breathe. It is during these times of calm that patients and their loved ones are able to share special moments and create memories that will be held close by those who are left behind.

These moments may be as simple as eating a meal together, holding hands or spending the day in the garden or curled up together on one of Oakhaven's cuddle beds. Your support of as little as £6 a month will help create these lasting moments for patients and their loved ones.

Moments build memories and for those facing end of life these are precious gifts both in the present and for the future, a time to share love, to talk and a time to say goodbye.

Become a Moment Maker

'Moment Makers' is a new initiative by Oakhaven Hospice, focused on monthly donations that directly

supports patients and their families.

By choosing to give monthly to Oakhaven Hospice you will be giving special and meaningful moments to local people facing death or the death of a loved one. Creating treasured memories in the toughest of times.

£6 a month helps transport patients to and from Oakhaven's Day Hospice, where they can enjoy a social day, shared laughter, a hearty lunch and relax for a while.

£12 a month gives those coping with a diagnosis or following the death of a loved one the opportunity to work through their emotions with an Oakhaven Counsellor.

£36 a month brings the hospice to peoples' homes, with Oakhaven's community teams supporting patients and helping them to stay independent at home for as long as possible.

To give regularly as an Oakhaven Moment Maker, please visit www.oakhavenhospice.co.uk/moment-makers, email fundraising@oakhavenhospice.co.uk or call 01590 677773.

Give a one-off donation

There are a number of ways to give a one-off gift to Oakhaven Hospice. To donate online, please visit www.oakhavenhospice.co.uk/donate-now.

.co.uk/donate-now. If you would prefer to send a cheque, please make your cheque payable to 'The Oakhaven Trust' and post it to The Fundraising Team, Oakhaven Hospice, Lower Pennington Lane, Lymington SO41 8ZZ. Alternatively please call 01590 677773 or email fundraising@oakhavenhospice.co.uk

You can make your donation go even further with Gift Aid. If you pay income tax, Oakhaven can claim back a further 25p for every £1 you donate from HMRC on any amount that you choose to give and it costs you nothing! Simply download and complete a Gift Aid Declaration form (www.oakhavenhospice.co.uk/how-to-donate) and send it together with your donation and Oakhaven will be able to collect the income tax you have paid, making your donation go further.

Join Local Hospice Lottery in support of Oakhaven Hospice

Playing the Local Hospice Lottery in support of Oakhaven Hospice gives you a chance to win £2,000 every single week - along with 200 other cash prizes. Players are also automatically entered into Super Draws, which take place every March, September and December and have an additional guaranteed top prize of an incredible £10,000! Find out more, including how to sign up at www.oakhavenhospice.co.uk/lottery

2. Fundraise

Challenge yourself - as an individual, group or business - to raise funds for Oakhaven!

There are so many ways you could fundraise for Oakhaven over the coming months. Take part in a fundraising event, organise your own fundraiser or take on a challenge...

Wear Green Day - Friday 25th October

Could you wear green for Oakhaven Hospice in exchange for a donation? This year Oakhaven's 'Wear Green Day' is Friday 25th October (although you could hold a Wear Green Day on any day!) - it is a great way for everyone to get involved in the 'Oakttober' month of fundraising. Wear green clothes, hats, wigs, nails, facepaint... you choose! To help you organise your Wear Green Day outfit, all the Oakhaven charity shops will have rails of green clothes and accessories - do pop by for a browse!

Care for a cuppa

Join together with friends and family to host your very own 'Care for a Cuppa' tea party or coffee morning to raise funds for Oakhaven Hospice. Care for a Cuppa can be held at home with friends and family, at work,

at school or in a local community venue. Whether you're a coffee, tea or hot chocolate lover, a keen baker, or just like to gather with your friends to 'do something great' - this is the perfect feel-good fundraiser!

The Oakhaven team knows the importance of a cuppa and a chat; every year Oakhaven make thousands of cups of tea and coffee in the Hospice and Coates Centre, providing comfort and support for patients, their families and others in the community who are living with a diagnosis or coming to terms with bereavement.

Sign up for 'Care for a Cuppa' at www.oakhavenhospice.co.uk/care-for-a-cuppa

and you'll receive a special fundraising pack, including a poster, recipes and an easy and fun 'who takes sugar' game to play. You'll also find more resources to download on Oakhaven's website including colour-in pages for children. Not enough cups? No problem, get in touch with the Oakhaven fundraising team who can lend you some!

Organise a fundraiser

There are many ways you can choose to fundraise for Oakhaven, from holding a bake-off to shaving your head to putting on a quiz! There really is no limit to what you can do.

The Oakhaven Community Fundraising team would love to hear about your fundraising efforts and can offer advice and resources to help you fundraise. Visit www.oakhavenhospice.co.uk/help-us-fundraise where you'll find a range of downloadable resources including Bake Off scorecards, colour-in posters, quiz sheets, poster and social media resources. Contact Jill and Hannah at fundraising@oakhavenhospice.co.uk or call 01590 677773.

Christmas Shopping at Delawarr - 20th-21st November

The popular Christmas Shopping fundraiser for Oakhaven at Delawarr House in All Saints Road, Lymington, will be back on Wednesday 20th from 1pm to 8pm and Thursday 21st from 9am to 1pm. Everyone is welcome, there will be at least 20 fabulous local businesses, the MEGA raffle with wonderful prizes and much more. For more information subscribe to Oakhaven's monthly email update at www.oakhavenhospice.co.uk/newsletter

Christmas Dining Divas - Wednesday 4th December

'Dining Divas' lunches raise funds for Oakhaven Hospice at great restaurants around the New Forest, always with a fabulous guest speaker. The Christmas lunch will be taking place at Barton on Sea Golf Club on Wednesday 4th December. For more information please visit www.oakhavenhospice.co.uk/diningdivas

Santa Dash - Sunday 8th December

Oakhaven's annual Santa Dash is known to many as the "unofficial start of Christmas" in Lymington! The 3km festive fun run around the streets of Lymington starts and finishes outside event sponsors, John D Wood & Co. Dress as Santa or in any festive outfit, children are welcome (including in buggies and on scooters), as are well-behaved dogs on leads. Registration is now open! Adult £15. Child £7.50. Family £40. Group of Six: £60.

Visit www.oakhavenhospice.co.uk/santa-dash to register today!

Sponsorship is vital!

With Oakhaven events, registration or entry fees simply help the team to cover costs. To make a real difference, consider raising the sponsorship - the Oakhaven fundraising team can provide you with a sponsor form or help you set up an online Justgiving page. If you own or work for a business, could it sponsor part of the event?

Find more upcoming fundraising events at www.oakhavenhospice.co.uk/events

Local business support

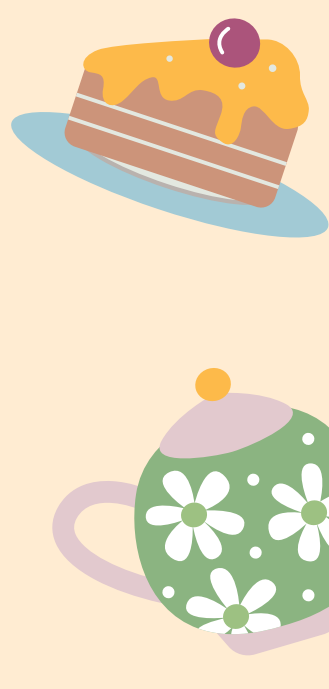
By supporting Oakhaven Hospice, businesses can help to make a real difference in the lives of local families at the toughest of times. Oakhaven's fundraising team works in partnership with businesses of all sizes. There are many ways you can support the charity; every relationship the team builds with a business partner is bespoke to ensure it is mutually beneficial, fulfilling your business objectives and working for you and your employees.

Supporting Oakhaven Hospice can bring many opportunities to your business, including: bringing your employees closer together and boosting morale; networking; giving back to your local community; building positive PR and fulfilling your corporate social responsibility objectives.

There are a many of ways that your business could support Oakhaven, from sponsoring an event to becoming a Corporate Partner, joining the Oakhaven Business Club to setting up match funding and payroll giving. This Christmas your business could even be a Corporate Christmas Star!

Find more information at www.oakhavenhospice.co.uk/corporate or contact Natalie Hutchins at business@oakhavenhospice.co.uk or by telephone 01590 613036.

Host a fundraising coffee morning or afternoon tea for Oakhaven Hospice!



Register for your fundraising pack today at: oakhavenhospice.co.uk/care-for-a-cuppa

Scan me



Help us support local families



Charity Registration No. 900215 (England & Wales)



Save the date!
This year's **Santa Dash** will be taking place on Sunday 8th December

Join us this Oakttober

Help us fundraise during October for Oakhaven Hospice!



Get active, get baking, get organising & make a difference!



oakhavenhospice.co.uk/oakttober



Charity Registration No. 900215 (England & Wales)



Advertisement feature



Oakhaven's family of volunteers help in the hospice, in the Coates Centre, in the charity shops and in patients' homes

3. Volunteer

Oakhaven's wonderful volunteers give the gift of their time.

"Our volunteers are simply amazing: they give their time and energy to support Oakhaven, bringing a wealth of experience along with their commitment in wanting to help others and make a difference."

- Donna Wilkins, HR Director

When people ask what they could do as a volunteer for Oakhaven Hospice, the short answer is "almost anything". Volunteers support Oakhaven's work in every department. Many support the people cared for in the hospice, others support patients in their homes as Oakhaven Neighbours. A fantastic team helps in Oakhaven's shops, whilst others assist with events.

Oakhaven is always looking for new people to join the family of volunteers. Here are a few of the reasons why giving the gift of time to Oakhaven can be a rewarding experience.

- Give something back to an organisation that has helped your family or friends
- Provide a listening ear to someone who is going through a difficult time
- Make a difference to people who are at the end of life
- Meet new people and make new friends
- Gain skills and experience to help you start your chosen career
- Use your existing skills and knowledge to help others
- Feel valued and part of the cherished Oakhaven family

Find out more about each of these roles at www.oakhavenhospice.co.uk/volunteer. If you have any questions or would like to chat about any of the roles, please call 01590 646447 or email volunteering@oakhavenhospice.co.uk.

4. Shop

Oakhaven shops: the sustainable way to buy clothes, toys, books, homeware and furniture - and an important source of income for the charity.

Oakhaven currently has nine shops, located in Lymington, Totton, New Milton and Hythe - with a new Craft & Home shop due to join the line-up in Lymington this winter. These communities are served by the Hospice and, in return, generously support with purchases and donations. Find details of the shops at www.oakhavenhospice.co.uk/retail-shops.

Each shop has a unique personality and is an Aladdin's cave of treasures - so whether you are looking for a new outfit, something for your home, or high-quality preloved books, toys and games for children, it is worth popping in for a browse!

Staff and volunteers will welcome you with a smile on their faces, and it is wonderful that so many friendships have blossomed, not only within the team but with customers too. If you'd like to find out more about volunteering in an Oakhaven shop, pop in for a chat!

Meanwhile in Oakhaven's online

store - www.oakhavenhospice.co.uk/shop - you'll find great quality furniture, a link to the charity's eBay account (where you'll find collectables, unique items and vintage clothing) and Oakhaven's Christmas shop.

How to donate items to Oakhaven's shops

Oakhaven welcomes donations of high-quality preloved items for its charity shops and online stores. Anything that can be carried in a box or a bag can be taken to any of the Oakhaven shops, or to the Donation Station at 170 Wellworthy Road, Ampress Park in Lymington, during opening hours.

For larger items, including furniture, prams or nursery equipment, please check with the Furniture team before dropping anything off, to check that the items can be accepted. You can also request a collection. The team is unable to accept some items due to Health and Safety regulations or lack of public demand. Last year it cost Oakhaven £20,000 to dispose of unsaleable donations - Oakhaven has to pay to dispose of items, whereas householders can use the recycling centre free of charge.

Please visit www.oakhavenhospice.co.uk/large-shop-donations, email warehouse@oakhavenretail.co.uk or call 01590 637781.

5. Leave a gift in your will

It is thanks to the legacy of Phoebe and John Coates that Oakhaven Hospice is here to care and support for our community. The land on which the hospice sits was gifted to the charity to enable those at the end of life to receive specialist care in a safe and comfortable environment.

For over thirty years, Oakhaven has grown to support patients and their families throughout our New Forest, Totton and Waterside community in so many ways and hopes to be able to remain for many years to come. For all of us, the future is uncertain, and none of us know how or when we will die, but planning for the future is an important part of life.

By making a gift in your will to Oakhaven, your legacy will help local families in the future to be supported from diagnosis through end of life and in bereavement for those that remain. A gift in your will doesn't have to be large, it will make a difference no matter its size.

Leaving a lasting legacy to Oakhaven in this way ensures your local hospice will be able to continue caring for those in our community when they need us most. Your gift will help Oakhaven to



Oakhaven Hospice is the legacy left as a gift by Phoebe and John Coates



Oakhaven Care Assistant Jade supporting Mary

make every moment matter at the most difficult of times.

"A legacy is humbling and priceless - to help others is a gift in itself"

If leaving a gift in your will is something that you might like to consider, further information can be found at www.oakhavenhospice.co.uk/legacy

There are still a few days in which you can take advantage of Oakhaven's Write A Will Month! This September, Oakhaven has teamed up with local solicitors and estate planners who will waive their usual will writing fee in return for a donation to Oakhaven Hospice.

Having an up-to-date will ensures that your wishes are met after your death. You can look after family and friends and support the causes you care about most. Leaving a gift in your will can be a highly tax-efficient way of giving to charity and supporting your community. Visit www.oakhavenhospice.co.uk/write-a-will for full details, including how to book by 30 September for an appointment by 31 October.

6. Oakhaven Care

Care and companionship in your home that helps to fund your local hospice.

Established just over ten years ago as a social enterprise and

wholly owned subsidiary of The Oakhaven Trust, all profits made by Oakhaven Care Ltd directly support the work of Oakhaven Hospice. This is innovative and unique; Oakhaven Care Ltd is the only home care provider in the area that funnels all its profits into a local charity rather than into the pockets of investors!

Oakhaven Care provides first-class visiting and 'live-in' home care services to help you or your loved ones to live with more independence at home. From 30-minute drop-in visits to multiple daily visits, extending to live-in and 24-hour care as and when required, Oakhaven Care Assistants can support you to remain in the comfort of your own home and maintain your chosen lifestyle.

The friendly, highly trained team provides a wide range of paid care services, tailored to your exact needs and wishes for your daily routine. Oakhaven Care Assistants can provide help with daily life including personal care; support with medication, nutrition and fluids; assistance with getting up and going to bed; light domestic duties; and outings to appointments, shops and social activities.

Live-in care provides full-time support, companionship - and reassurance for loved ones. It can be an excellent alternative to having to move into a residential care home, providing more independence and choice, in familiar surroundings. Live-in care can also be respite care, enabling an earlier return home after a stay in hospital, or for family to take a holiday



with peace of mind that you have support and companionship.

Oakhaven Care has offices in Totton and Lymington and covers the whole New Forest and Waterside area, from Fordingbridge, Ringwood and New Milton to Waterside, Totton and Romsey. Find out more at www.oakhavencare.co.uk. Get in touch for a chat and to book a free consultation in your own home. Telephone 02381 800 505 or 01590 646 400, or email info@oakhavencare.co.uk

"Oakhaven Care provides my mother with a fantastic service. They are very reliable, conscientious and kind. They go out of their way to provide a first-class service, even when contacted out of hours, nothing is too much trouble and they are extremely focussed on the wellbeing of their client. I would strongly recommend Oakhaven Care to anyone looking for a home care provider."

- Andrew, Oakhaven Care client

7. Support

Stay in the loop about what's happening at Oakhaven, including news about events, activities and the Oakhaven Shops by signing up for Oakhaven's monthly email update and/or 'Oakhaven Matters' magazine at www.oakhavenhospice.co.uk/newsletter

Help to spread the word on social media about Oakhaven's vital services and fundraising activities. Follow and share [@oakhavenhospice](https://www.facebook.com/oakhavenhospice) on Facebook, Instagram, X and LinkedIn.



The 1,000-piece jigsaw, 'A Safe Haven' by local artist, Anne Gooch, is on sale in the Oakhaven shops and online

Get ready for Santa Dash!

In Lymington On Sunday 8th December Registration now open!



Scan me



oakhavenhospice.co.uk/santa-dash

Supported by JOHN D WOOD & CO London & Country Estate Agents

Charity Registration No.900215 (England & Wales)



Pledge a gift in your will

to help people you love receive the vital end of life care they need

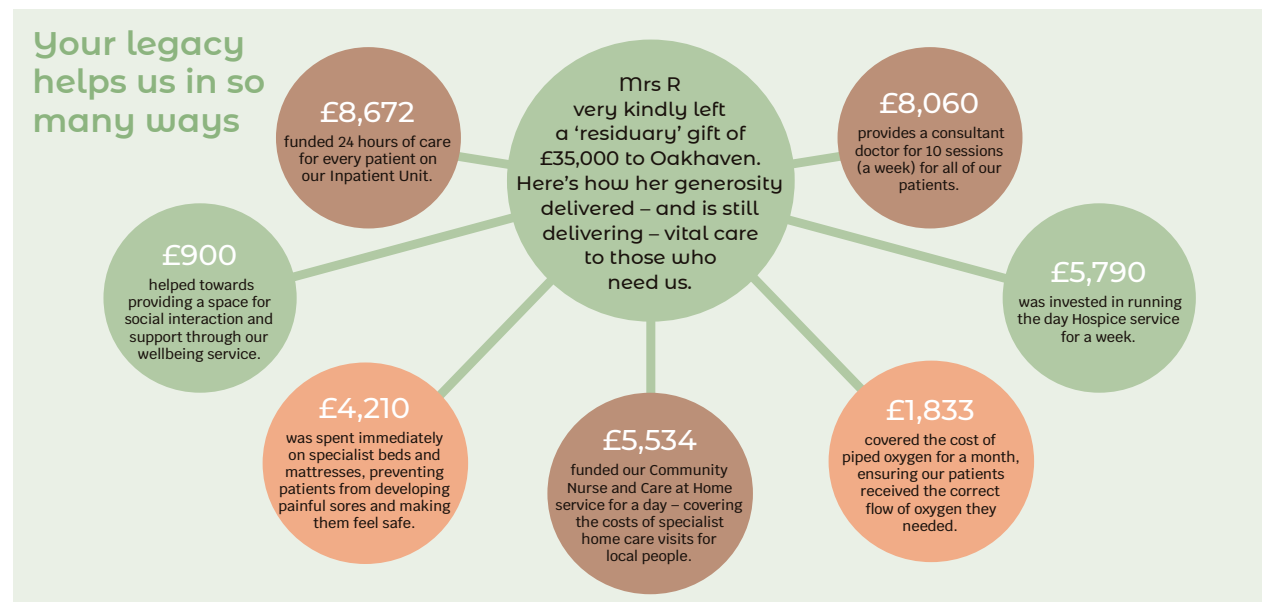
Oakhaven has grown to support patients and their families throughout our community in so many ways and hopes to be here for many years to come.

For all of us, the future is uncertain. None of us know how or when we will die, but planning for the future is an important part of life.

By making a gift in your will to Oakhaven, your legacy will help local families in the future to be supported from diagnosis through end of life and in bereavement for those that remain. A gift in your will doesn't have to be large, it will make a difference no matter its size.



Leaving a lasting legacy to Oakhaven in this way ensures we will be able to continue caring for those in our community when they need us most. Your gift will help us to make every moment matter at the most difficult of times.



All figures relate to the period April 2021 - March 2022.




SHOREFIELD
HOLIDAYS LIMITED

Great British Breaks & Luxury Escapes

SINCE 1958

Happy holidays and the memories they create have been at the heart of our family-run business for over 65 years.

Shorefield is an award winning, forward-thinking family-run company which has hosted over 65 years of happy memories for families, groups, friends and couples alike. Still owned and run by the family of founder Dr. Robert Pollock who started the company in 1958, Shorefield is a business that cares for holiday makers, owners, the local community and the landscapes that surround the eight parks on the UK's South Coast.

From luscious green landscapes to serene sea views, the first-class accommodation offers the perfect setting for a scenic British break. There's neverending opportunities to explore the dramatic natural beauty found right on the doorstep which is why more than 100,000 holiday makers and owners continue to choose Shorefield each year to make lasting memories with loved ones.

From tranquil days spent in our luxury holiday and ownership lodges to full-on family adventures exploring the great British outdoors and maintaining a healthy lifestyle in our fitness clubs, **Shorefield Holidays has something for everyone.**

- Eight award winning parks
- Over 220,000 visitor nights annually
- Over 340 employees across a range over 20 careers & professions
- Proud to support & partner local businesses
- Health & well-being focused
- Committed to being a green & sustainable business



Proud supporters of
FAMILY BUSINESS WEEK

Our holiday homes come with a holiday park licence, therefore cannot be used or treated as a main residence. Shorefield Holidays Ltd are authorised and regulated by the FCA (688069) as a credit broker, not a lender. Trading as: Shorefield Holidays Limited. Registered No.607997. Registered Office. Shorefield Road, Milford on Sea, Hampshire SO41 0LH. Tel: **01590 648353** email: enquiries@shorefield.co.uk visit: shorefield.co.uk

Follow us     @shorefieldholidays